



January 11, 2015

Madison County Board of Supervisors
146 West Center Street
Canton, MS 39046

Re: Proposed new building for Carr Plumbing Supply

Gentlemen:

This proposal is for a new building to be used for a showroom to display plumbing fixtures for customers to see.

It will offer customers in Madison and surrounding counties a convenient location to see and have a "hands on" showroom. It will also have working custom showers and fixtures displayed for the public to view.

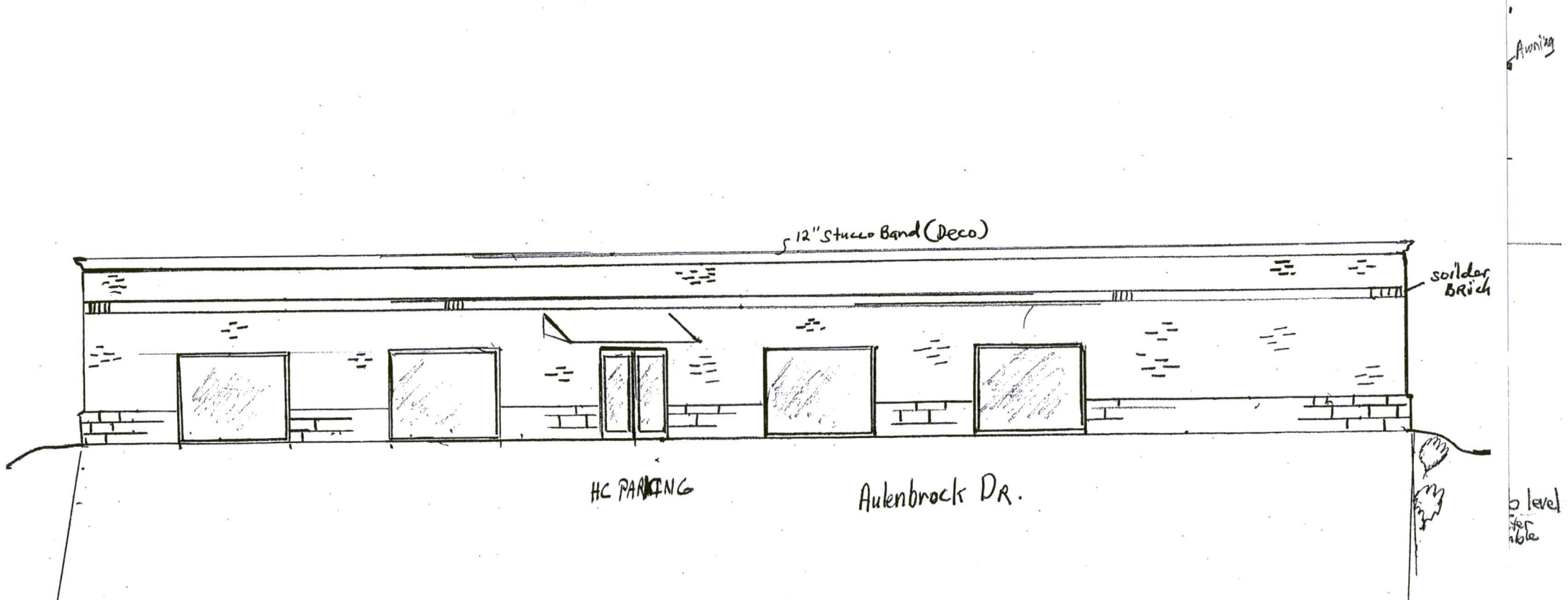
It is to be located on the corner of Yandell Road and Aulenbrock Drive next door to the existing Carr Plumbing Supply location.

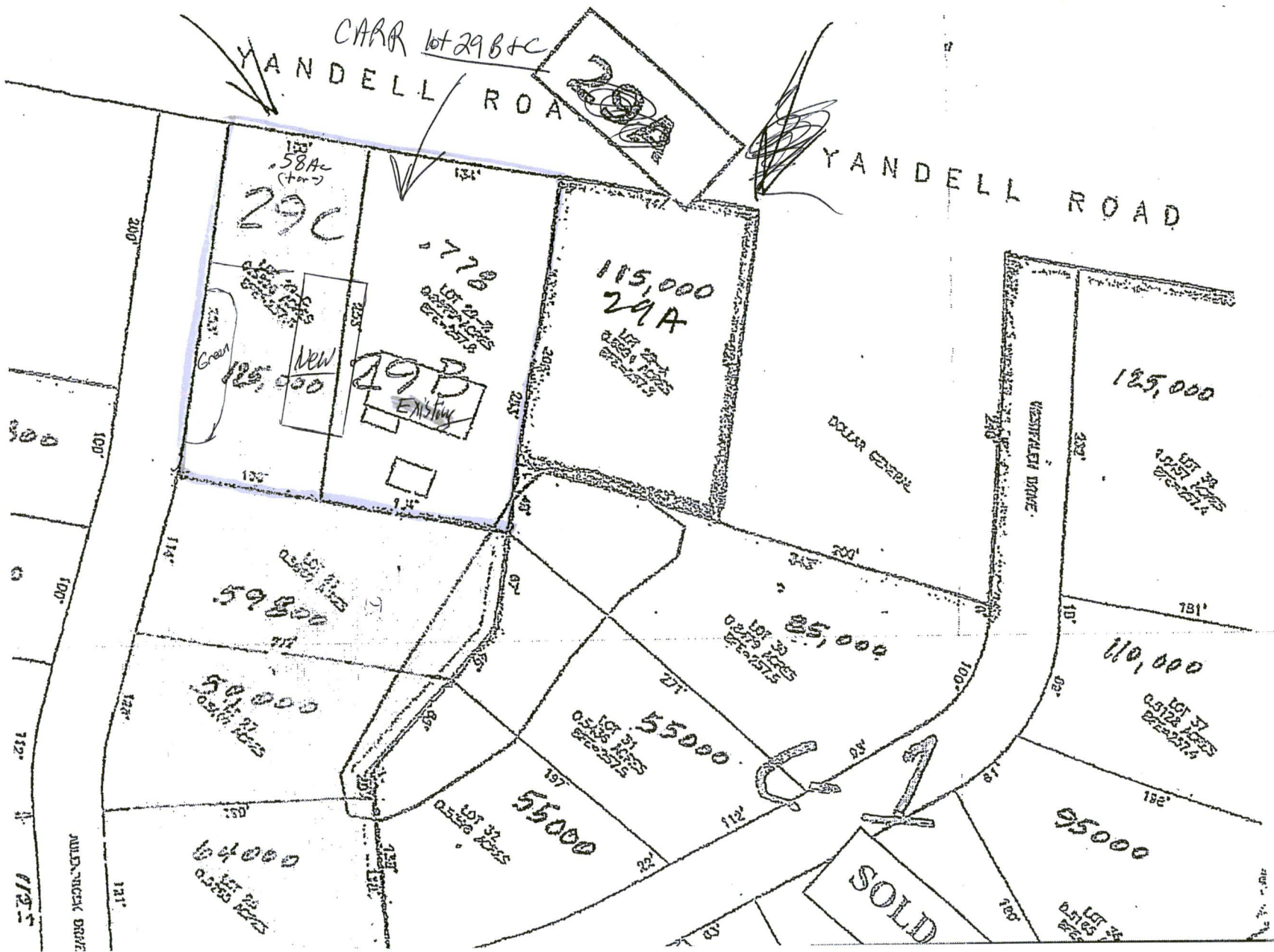
The existing 6' cyclone fence in front of and on the west side of the current building will be replaced with a 6' wood fence (as shown on the plan attached) to separate the new proposed building from the existing building and pipe yard.

Thank you.

Joe Welch
Joe Welch, LLC
Building Contractors
601-624-2000

CARR PLUMBING SHOW ROOM, Gluckstadt, MS.



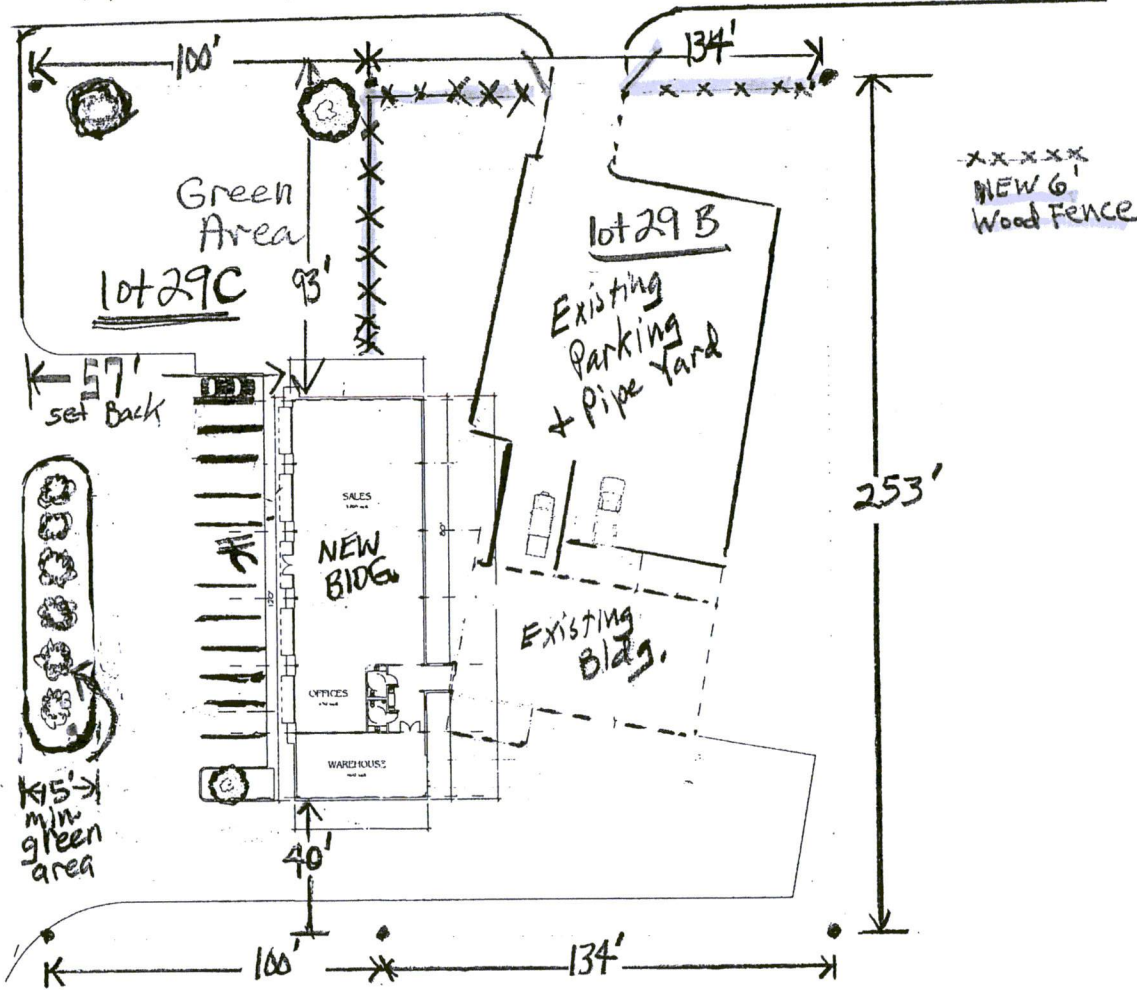


Shell station
concrete



Aulenbrack DR.

YANDELL ROAD



1/8" = 1' (NTS)

Site Plan
 Gulf Line Road Rental Property
 Date: 10/15/11
 Drawn by: [Name]
 Checked by: [Name]
 Scale: 1/8" = 1' (NTS)

NO.	DATE	DESCRIPTION
1	10/15/11	ISSUED FOR PERMIT
2	10/15/11	REVISED PER COMMENTS
3	10/15/11	REVISED PER COMMENTS
4	10/15/11	REVISED PER COMMENTS
5	10/15/11	REVISED PER COMMENTS
6	10/15/11	REVISED PER COMMENTS
7	10/15/11	REVISED PER COMMENTS
8	10/15/11	REVISED PER COMMENTS
9	10/15/11	REVISED PER COMMENTS
10	10/15/11	REVISED PER COMMENTS
11	10/15/11	REVISED PER COMMENTS
12	10/15/11	REVISED PER COMMENTS
13	10/15/11	REVISED PER COMMENTS
14	10/15/11	REVISED PER COMMENTS
15	10/15/11	REVISED PER COMMENTS
16	10/15/11	REVISED PER COMMENTS
17	10/15/11	REVISED PER COMMENTS
18	10/15/11	REVISED PER COMMENTS
19	10/15/11	REVISED PER COMMENTS
20	10/15/11	REVISED PER COMMENTS
21	10/15/11	REVISED PER COMMENTS
22	10/15/11	REVISED PER COMMENTS
23	10/15/11	REVISED PER COMMENTS
24	10/15/11	REVISED PER COMMENTS
25	10/15/11	REVISED PER COMMENTS
26	10/15/11	REVISED PER COMMENTS
27	10/15/11	REVISED PER COMMENTS
28	10/15/11	REVISED PER COMMENTS
29	10/15/11	REVISED PER COMMENTS
30	10/15/11	REVISED PER COMMENTS
31	10/15/11	REVISED PER COMMENTS
32	10/15/11	REVISED PER COMMENTS
33	10/15/11	REVISED PER COMMENTS
34	10/15/11	REVISED PER COMMENTS
35	10/15/11	REVISED PER COMMENTS
36	10/15/11	REVISED PER COMMENTS
37	10/15/11	REVISED PER COMMENTS
38	10/15/11	REVISED PER COMMENTS
39	10/15/11	REVISED PER COMMENTS
40	10/15/11	REVISED PER COMMENTS
41	10/15/11	REVISED PER COMMENTS
42	10/15/11	REVISED PER COMMENTS
43	10/15/11	REVISED PER COMMENTS
44	10/15/11	REVISED PER COMMENTS
45	10/15/11	REVISED PER COMMENTS
46	10/15/11	REVISED PER COMMENTS
47	10/15/11	REVISED PER COMMENTS
48	10/15/11	REVISED PER COMMENTS
49	10/15/11	REVISED PER COMMENTS
50	10/15/11	REVISED PER COMMENTS
51	10/15/11	REVISED PER COMMENTS
52	10/15/11	REVISED PER COMMENTS
53	10/15/11	REVISED PER COMMENTS
54	10/15/11	REVISED PER COMMENTS
55	10/15/11	REVISED PER COMMENTS
56	10/15/11	REVISED PER COMMENTS
57	10/15/11	REVISED PER COMMENTS
58	10/15/11	REVISED PER COMMENTS
59	10/15/11	REVISED PER COMMENTS
60	10/15/11	REVISED PER COMMENTS
61	10/15/11	REVISED PER COMMENTS
62	10/15/11	REVISED PER COMMENTS
63	10/15/11	REVISED PER COMMENTS
64	10/15/11	REVISED PER COMMENTS
65	10/15/11	REVISED PER COMMENTS
66	10/15/11	REVISED PER COMMENTS
67	10/15/11	REVISED PER COMMENTS
68	10/15/11	REVISED PER COMMENTS
69	10/15/11	REVISED PER COMMENTS
70	10/15/11	REVISED PER COMMENTS
71	10/15/11	REVISED PER COMMENTS
72	10/15/11	REVISED PER COMMENTS
73	10/15/11	REVISED PER COMMENTS
74	10/15/11	REVISED PER COMMENTS
75	10/15/11	REVISED PER COMMENTS
76	10/15/11	REVISED PER COMMENTS
77	10/15/11	REVISED PER COMMENTS
78	10/15/11	REVISED PER COMMENTS
79	10/15/11	REVISED PER COMMENTS
80	10/15/11	REVISED PER COMMENTS
81	10/15/11	REVISED PER COMMENTS
82	10/15/11	REVISED PER COMMENTS
83	10/15/11	REVISED PER COMMENTS
84	10/15/11	REVISED PER COMMENTS
85	10/15/11	REVISED PER COMMENTS
86	10/15/11	REVISED PER COMMENTS
87	10/15/11	REVISED PER COMMENTS
88	10/15/11	REVISED PER COMMENTS
89	10/15/11	REVISED PER COMMENTS
90	10/15/11	REVISED PER COMMENTS
91	10/15/11	REVISED PER COMMENTS
92	10/15/11	REVISED PER COMMENTS
93	10/15/11	REVISED PER COMMENTS
94	10/15/11	REVISED PER COMMENTS
95	10/15/11	REVISED PER COMMENTS
96	10/15/11	REVISED PER COMMENTS
97	10/15/11	REVISED PER COMMENTS
98	10/15/11	REVISED PER COMMENTS
99	10/15/11	REVISED PER COMMENTS
100	10/15/11	REVISED PER COMMENTS